

SPECIMEN PREPARATION



Step 1

Specimen is drawn via venipuncture using a clot tube such as might be used when drawing a specimen for serum chemistries. In addition to a normal clot tube (red top), a serum separation tube such as the SST (tiger top) or AUTOSEP or their equivalents may also be used.



Step 3

After centrifuging, the serum should be removed from the drawing tube and placed in the transport tube supplied in the shipping kit from Clifford Consulting & Research.



Step 2

Blood should be allowed to clot for +/- 15 minutes, and then centrifuged long enough to separate the serum from the clotted elements of the blood.



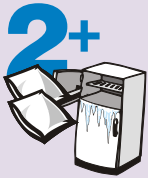
Step 4

Carefully **TIGHTEN** the cap on the serum transport tube and place it into provided biohazard safety bag. Place paperwork into the outer pouch of the specimen bag.

PLEASE DO NOT SHIP WHOLE BLOOD, SERUM STILL ON THE CLOT NOR SST TUBES.

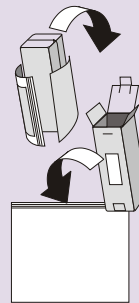
Hemolysis will ruin the specimen for testing purposes, and specimens are often subjected to substantial shaking, vibration and handling in shipping. Serum to be held more than 1 hour prior to shipping should be refrigerated at 2-6 C° or frozen for storage.

SHIPPING INSTRUCTIONS



Step 1

The small chill blocks provided in the specimen transport kit should be placed into the freezer for 2-3 hours prior to specimen shipment. They are not intended to keep the specimen frozen, but simply to help keep it cool during the overnight shipment.



Step 4

Close the paperboard sleeve up after inserting the prepared Styrofoam shells, specimen, chill blocks and paperwork. This entire shipping unit is then sealed in the plastic shipping bag with pre-paid express shipping. Please follow directions printed on shipping bag to arrange for pick-up or drop at appropriate location.



Step 2

The chill blocks should be placed into the styrofoam shells alongside the specimen bag. Refrigeration or freezing of specimens is strongly encouraged in cases where shipment will be delayed. Refrigerated blood specimens remain suitable for testing for up to 14 days. Frozen specimens are suitable indefinitely. Carefully re-tighten the cap on the specimen transport tube before closing the styrofoam shells.



Step 5

Clifford Consulting & Research will pay for shipping **ONLY** if the sender uses the provided materials included with the shipping kit. Shipping with any other air bill document or with any other overnight carrier must be paid by the sender.



Step 3

Insure that Doctor's order form and payment documents have been placed into the outer pouch of the biohazard bag provided.

PLEASE DO NOT SHIP ON FRIDAY OR SATURDAY.

The LAB ACCEPTS SHIPMENTS MONDAY THROUGH FRIDAY ONLY. SPECIMENS SHIPPED FOR WEEKEND DELIVERY WILL WAIT AT THE SHIPPING CENTER UNTIL MONDAY DELIVERY.